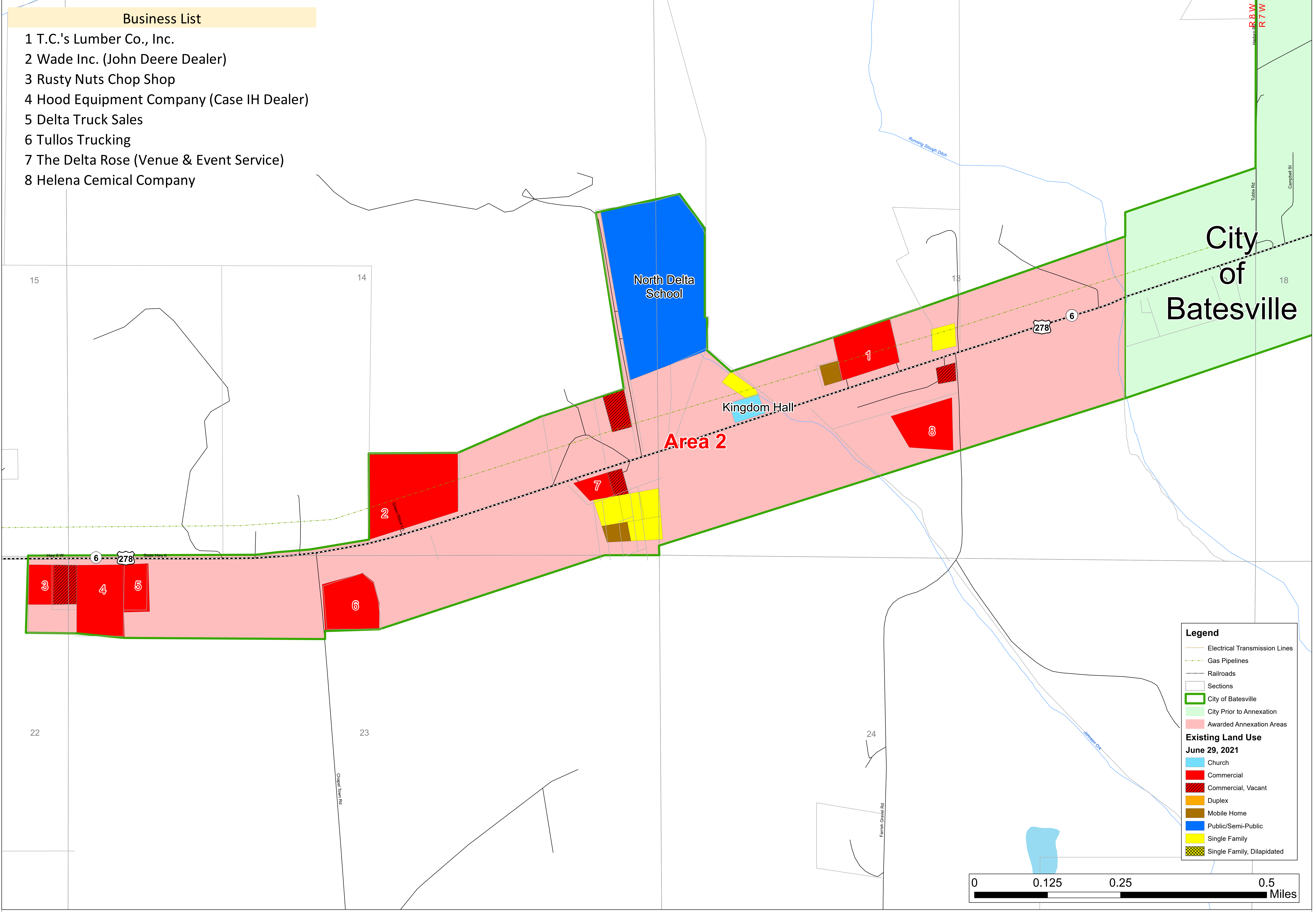


Business List

- 1 T.C.'s Lumber Co., Inc.
- 2 Wade Inc. (John Deere Dealer)
- 3 Rusty Nuts Chop Shop
- 4 Hood Equipment Company (Case IH Dealer)
- 5 Delta Truck Sales
- 6 Tullos Trucking
- 7 The Delta Rose (Venue & Event Service)
- 8 Helena Cemical Company

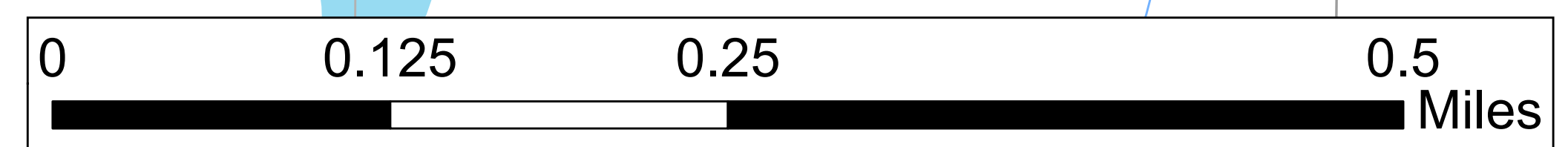


Legend

- Electrical Transmission Lines
- Gas Pipelines
- Railroads
- Sections
- City of Batesville
- City Prior to Annexation
- Awarded Annexation Areas

Existing Land Use
June 29, 2021

- Church
- Commercial
- Commercial, Vacant
- Duplex
- Mobile Home
- Public/Semi-Public
- Single Family
- Single Family, Dilapidated



SLAUGHTER & ASSOCIATES
URBAN PLANNING CONSULTANTS

POST OFFICE BOX 2401
OXFORD, MS 38655
662.234.6970

Base Map (Area 2) West
Awarded Annexation Areas
City of Batesville, Mississippi

Source(s):
Mississippi Automated Resource Information System (MARIS);
Mississippi Dept. of Transportation;
US Census Bureau 2010 TIGER Line Files;
Land Use Survey conducted June 29, 2021 & Updated September 1, 2021

Date: June 30, 2021
Revised: March 15, 2022
Note: This map is accurate for planning purposes only