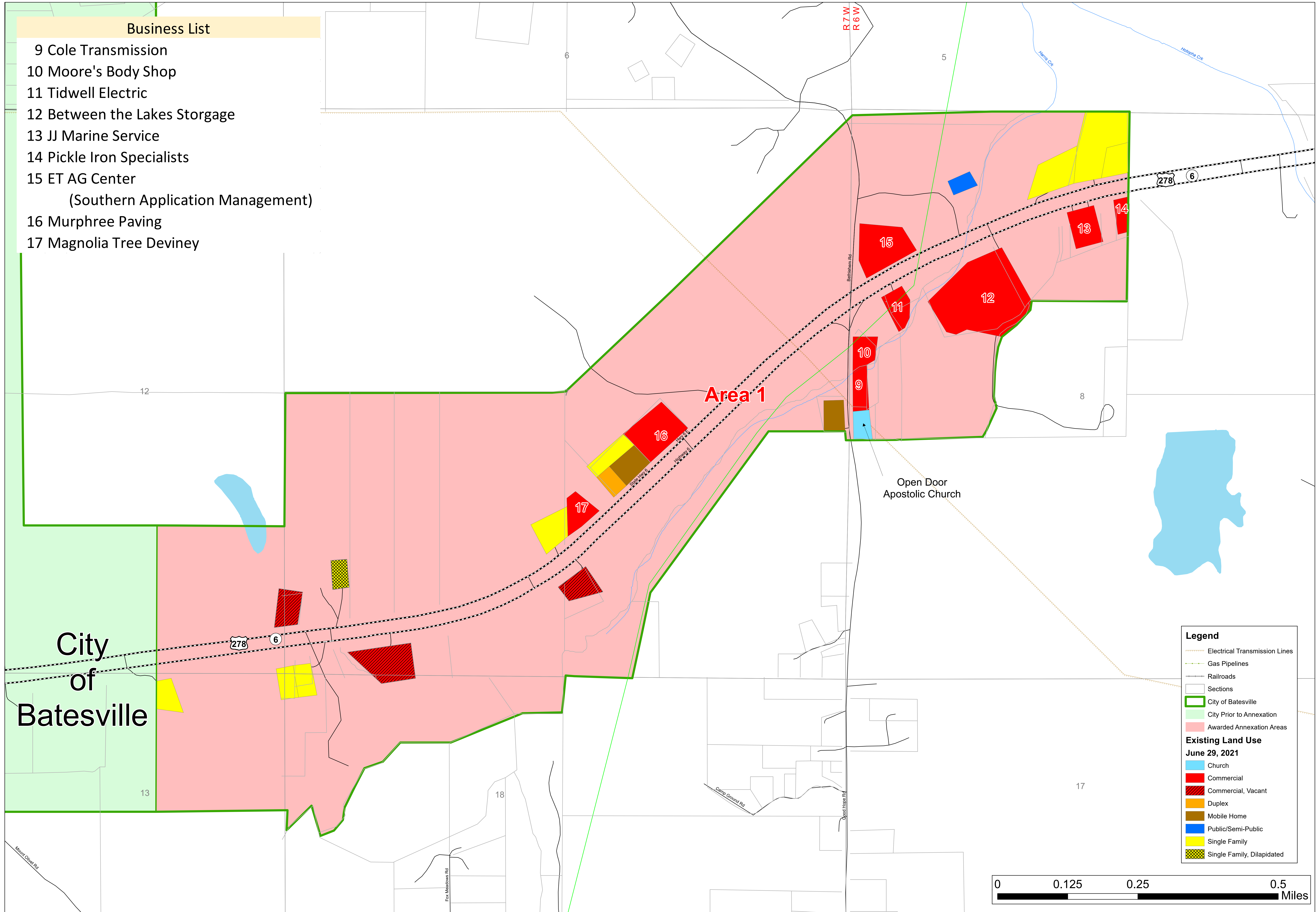


Business List

- 9 Cole Transmission
- 10 Moore's Body Shop
- 11 Tidwell Electric
- 12 Between the Lakes Storage
- 13 JJ Marine Service
- 14 Pickle Iron Specialists
- 15 ET AG Center
(Southern Application Management)
- 16 Murphree Paving
- 17 Magnolia Tree Deviney



City of Batesville

Area 1

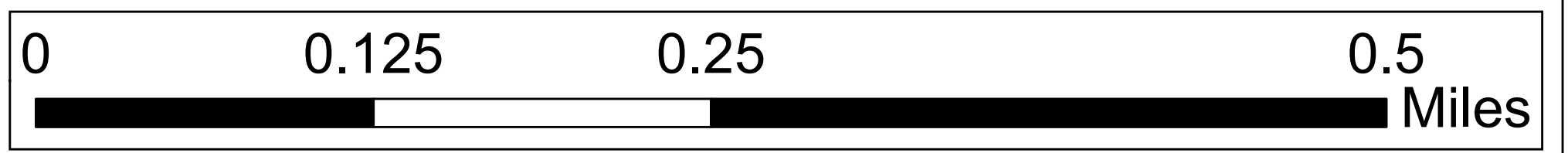
Open Door Apostolic Church

Legend

- Electrical Transmission Lines
- Gas Pipelines
- Railroads
- Sections
- City of Batesville
- City Prior to Annexation
- Awarded Annexation Areas

Existing Land Use
June 29, 2021

- Church
- Commercial
- Commercial, Vacant
- Duplex
- Mobile Home
- Public/Semi-Public
- Single Family
- Single Family, Dilapidated



SLAUGHTER & ASSOCIATES
URBAN PLANNING CONSULTANTS
POST OFFICE BOX 2401
OXFORD, MS 38655
662.234.6970

Base Map (Area 1) East
Awarded Annexation Areas
City of Batesville, Mississippi

Source(s);
Mississippi Automated Resource Information System (MARIS);
Mississippi Dept. of Transportation;
US Census Bureau 2010 TIGER Line Files;
Land Use Survey conducted June 29, 2021 & Updated September 1, 2021

Date: March 31, 2022
Note: This map is accurate for planning purposes only

